

EMERGENCY PROCEDURES

INDUSTRIAL ENGINEERING BUILDING (IEB) 2023

Compiled by: Anel de Beer & Amelia Henning

On behalf of: **Industrial Engineering Building, Faculty of Engineering, Stellenbosch University**

TABLE OF CONTENTS

1.	DECLARATION OF AN EMERGENCY.....	3
2.	INDUSTRIAL ENGINEERING BUILDING RISK MANAGEMENT COMMITTEE	3
3.	DISTRIBUTION LIST	4
4.	PURPOSE OF THIS DOCUMENT.....	4
5.	SCOPE OF DOCUMENT	4
6.	AIM OF DOCUMENT.....	4
7.	DEFINITIONS.....	4
8.	COMMAND AND CONTROL	6
9.	ORGANISATIONS AND RESPONSIBILITES.....	6
10.	EMERGENCY MANAGEMENT ORANOGRAM.....	7
11.	EMERGENCYPROCEDURES.....	8
12.	FIRE	8
13.	BOMB THREAT.....	9
14.	BOMB THREAT CHECK LIST	10
15.	EVACUATION	11
16.	CHEMICAL SPILL.....	12
17.	BIOLOGICAL CONTAMINATION.....	13
18.	DUTIES OF PERSONNEL	15
19.	EMERGENCY TELEPHONE NUMBERS.....	17
20.	EVACUATION PROCEDURE	17
21.	EVACUATION TEAM / FLOOR MARSHALLS.....	18
22.	ESCAPE ROUTE PLAN.....	19

1. DECLARATION OF AN EMERGENCY

The Emergency Coordinator shall communicate with the Dean of the Faculty of Engineering before a declaration of emergency is issued or cancelled in the General Engineering Building.

In the absence of such officials, the most senior person on site shall endeavour to contact the Emergency Committee for a declaration or cancellation of an emergency.

2. INDUSTRIAL ENGINEERING BUILDING RISK MANAGEMENT COMMITTEE

NAME	POSITION	LAND LINE.	CELL NO.
Prof Corne Schutte	Chairman: Industrial Eng.	021 808 3617	082 447 7780
Mr Gary Bailey	IT Server rooms SU	021 808 4297	079 632 1979
Mr Clive Govender	STC Master Artisan	021 808 4567	082 655 9486
Ms Amelia Henning	Administrative Officer	021 808 9532	083 635 5775
Ms Karina Smith	Administrative Officer	021 808 4234	082 386 2239
Mr Dean Johnson	Accountant	021 808 9700	084 362 2912
Ms Anèl de Beer	Departmental Manager	021 808 3927	082 899 4948

Date: 21 August 2023

Compilation date: 18 June 2018

6 Monthly Review Date: February 2024

Any suggested changes to this document must be submitted to the Emergency Coordinator for review and further approval by the Dean of the Faculty.

3. DISTRIBUTION LIST

NAME	POSITION
Mr Viljoen van der Walt	Head: Risk and Protection Services
Mr Mahoney Viljoen	US Occupational and Health Safety Officer
Ms Nicolette van den Eijkel	Chief Director: Facilities Management
Prof JL van Niekerk	Dean: Engineering
Mr VS D'Aguanno	Director: Faculty Management Engineering
All staff:	Industrial Engineering
Risk and Protection Services	SharePoint
Prof CSL Schutte	Chairman: Industrial Engineering
IE Building Risk Management Committee	Members

4. Purpose of this document

To ensure a timeous, well co-coordinated plan of action in the event of a major incident, accident, or any event the Dean deems to be a risk to employees, students or the general public at the Faculty of Engineering, Stellenbosch University.

5. Scope of document

To cover any emergency type eventuality that may require a co-coordinated action by any organization and or individuals.

6. Aim of document

To identify and outline a procedure drawn up by the Safety committees to cope with any emergency situation at Faculty of Engineering, with the ultimate aim to minimize the effects of such emergency so as to avoid:

- Panic
- Loss of Life
- Damage to property
- Injury to persons

7. DEFINITIONS

(a) STELLENBOSCH UNIVERSITY CONTROL CENTRE

Unless incapacitated - The place from where emergency communications and responses are centrally co-coordinated from. Situated at the Campus Protection Services.

(b) DEAN OF FACULTY

The person appointed by the University of Stellenbosch as Dean of the Faculty of engineering. The Emergency Coordinator reports to this person.

(c) EMERGENCY COORDINATOR

Appointed by the Dean of the Faculty of Engineering to head the General Engineering Building Risk Management Committee and holds the position of Faculty Manager.

(d) EVACUATION TEAM LEADER

The senior person employed by the Faculty of Engineering and member of the staff of the university.

(e) EVACUATOR

To be appointed by the Evacuation Team Leader.

(f) FIRE FIGHTER

Any staff member suitably qualified and appointed by the Evacuation Team Leader. Fire fighters will automatically act under the auspices of the Fire Department during an emergency.

(g) FIRST AIDER

Any suitably qualified person appointed by the Evacuation Team Leader.

(h) FIRST AID TEAM LEADER

Any suitably qualified person appointed by the Evacuation Team Leader.

(i) HEAD OF DEPARTMENT/CHAIRPERSON

The person appointed by the Dean of the Faculty of Engineering for the daily running of the operations and facilities in a specific area of the Mechanical & Industrial Engineering Building.

(j) PREMISES

Mechanical & Industrial Engineering Building, Faculty of Engineering, Joubert Street, Stellenbosch

(k) S.A.P.S.

The South African Police Service.

(l) MARSHALLS

Any suitably qualified person appointed by the various departments or divisions within the General Engineering Building.

(m) FACULTY OF ENGINEERING RISK MANAGEMENT COMMITTEE

The Risk Management Committee of the Faculty of Engineering under the Chairmanship of the Dean of Engineering and consisting of the different Building

Risk Management Committee Chairpersons, Vice-Deans of the Faculty of Engineering and Faculty Manager.

8. COMMAND AND CONTROL

- In the event of an emergency the Emergency Coordinator shall inform the Dean or his representative, Risk and Protection Services and the necessary emergency services immediately.
- The Emergency Coordinator shall work in conjunction with Risk and Protection Services, the appointed persons, the S.A.P.S or any other person or organisation he/she deems to be needed for such emergency.

9. ORGANISATIONS AND RESPONSIBILITIES

STAFF:

- Shall provide support for the Department Heads/Chairpersons, Emergency Coordinator, and any person in its employ to work in conjunction with the S.A.P.S in time of crisis to ensure that all evacuation routes are clear to affect an orderly and safe movement of persons from the premises.
- Provide technical support where deemed necessary.
- Assist with the evacuation of all students and staff and the manning of assembly points, roll-calls, and determination of attendance.

S.A.P.S:

- The S.A.P.S will be responsible for law and order, cordons, crowd control or any other necessary action needed as directed by the Minister of Safety and Security.
- To assist/improve and provide backup support during an evacuation, in line with their legal obligations.
- The S.A.P.S bomb squad and dog unit shall be informed at the discretion of the Emergency Coordinator.

FIRE RESCUE SERVICES OF STELLENBOSCH

- In the event of a fire, notify the Fire Department that falls under the control of the Stellenbosch Municipality. (The numbers are listed on page 22 of this document)

DISASTER MANAGEMENT UNIT

- The role of disaster management is a staff function, namely one of planning, coordination and back up in a major incident where additional resources or manpower and equipment are needed.

PUBLIC INFORMATION

- It is the responsibility of University of Stellenbosch, through the Rectors Office to provide information to the media and public. In the event of deaths or casualties, the S.A.P.S. will handle this in conjunction with the appointed Public Relations Officer of the University of Stellenbosch.

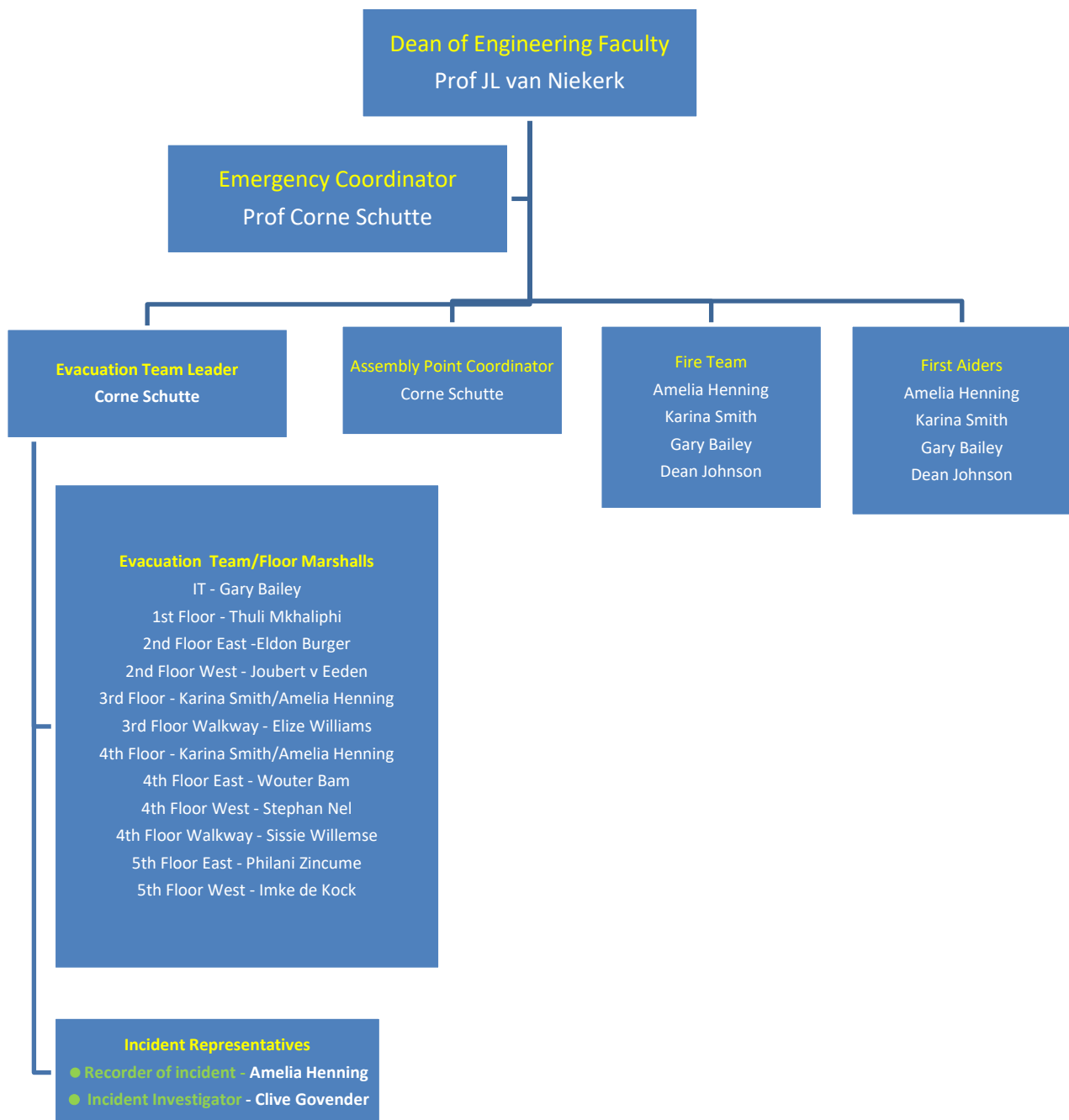
EMERGENCY PREPAREDNESS

- This Emergency Plan shall be revised on a six-monthly basis and submitted to the Faculty of Engineering Risk Management Committee for initial approval and Risk and Protection Services for further approval.
- The Rector shall give final approval.

STELLENBOSCH UNIVERSITY shall carry out all necessary training of its employees to cope with any emergency.

Mock emergency evacuations will be carried out on a six-monthly basis. This exercise will require the full participation of the Emergency Committee and other support persons.

10. EMERGENCY MANAGEMENT ORGANOGRAM



11. EMERGENCY PROCEDURES

12. FIRE

ALL STAFF

UPON DISCOVERY OF A FIRE

- Activate fire alarm or signal or alert any staff member in the Industrial Engineering Building immediately.
- Inform Fire Department by cell phone, land line, messenger or break glass unit.
- Notify Risk and Protection Services.

THEREAFTER

- Floor Marshalls to guide staff and students away from the affected area to designated gathering points.
- Cordon off affected area.
- Close doors and windows in the immediate proximity of the fire.
- Commence firefighting procedures with nearest fire extinguishing equipment without endangering own life.
- Await instructions from the Fire Team Leader/Fire Fighter/Emergency Coordinator.

EMERGENCY COORDINATOR

- Ascertain if the Fire Department has been informed and contact Rector.
- Assess situation.
- Communicate with fire team and obtain situation reports.
- Establish forward control point.
- Evacuate if required.
- Instruct responsible person to liaise with the fire department upon arrival.
- Order stand down at termination of incident.

PERSONNEL

UPON NOTIFICATION OF A FIRE

- Inform Manager.
- Inform Emergency Coordinator.

UPON INSTRUCTION FROM EMERGENCY COORDINATOR

- Inform fire department.
- Follow emergency procedure card for category of disaster as determined by Emergency Coordinator.
- Keep telephone lines clear for calls.
- Await further instructions from Emergency Coordinator.

13. BOMB THREAT

ALL STAFF

UPON RECEIPT OF A TELEPHONIC OR VERBAL BOMB THREAT:

- Obtain as much information as possible (use Bomb Threat Checklist).
- Inform Risk and Protection Services by telephone, radio or messenger.
- Complete remainder of Bomb Threat Checklist to the best of your ability.

UPON RECEIPT OF A BOMB SEARCH ALARM / SIGNAL:

- Search immediate work area for objects that appear “out of place” If nothing found, await instructions from Emergency Coordinator.
- If anything suspicious found, refer to next procedure.

UPON DISCOVERING A SUSPICIOUS PARCEL / OBJECT:

- **DO NOT TOUCH OR TRY TO REMOVE!**
- Inform S.A.P.S.
- Open all windows and doors in immediate proximity.
- Keep all people away from affected area without causing panic.
- Await instructions from Emergency Coordinator.

ACTUAL BOMB BLAST:

- Evacuate premises.
- Set up a perimeter and cordon off area.
- If possible, assist seriously injured casualties (do not move seriously injured or unconscious people unless qualified to do so or unless the casualties’ life is further endangered).
- Guide all people away from affected area.
- Guide injured people to safety, where possible.
- Await instructions from Emergency Coordinator.

RECEPTION

UPON RECEIPT OF A TELEPHONIC OR VERBAL BOMB THREAT:

- Receive particulars of bomb threat (use Bomb Threat Checklist where possible).
- Inform the Emergency Coordinator.

UPON INSTRUCTION FROM EMERGENCY COORDINATOR:

- Notify S.A.P.S/ Fire Department.
- Sound evacuation alarm or signal.
- Keep telephone lines clear for calls.
- Inform officers to sweep the area.

EMERGENCY COORDINATOR

DEPENDING ON THE SITUATION:

- Notify S.A.P.S or Fire Department.
- Summon Fire Team, First Aid and Evacuation Team Leaders.
- Assess situation.
- Instruct Control to notify Emergency Response Teams.
- Order superficial search, partial or full evacuation.
- Liaise with S.A.P.S upon arrival.

EVACUATION TEAM RESPONSIBILITIES

- Evacuate students and staff from building avoiding affected area, if known.
- Conduct search of premises for slow moving people.
- Receive roll call results from Section members.
- Report findings to Emergency Coordinator.

FIRST AID TEAM

- Await instructions from Emergency Coordinator.

- Attend to casualties as required (at scene of injury or Emergency Centre or Control Point).
- Request further assistance, if required.
- Liaise with professional emergency medical services.

14. BOMB THREAT CHECK LIST

Date: Time:

TRY TO ENSURE THAT CONVERSATION IS RECORDED OR HAVE SOMEONE LISTENING IN.

Exact wording of message: **(KEEP THE CALLER TALKING - ASK QUESTIONS SUCH AS):**

1. When will it go off?
2. What kind of bomb is it?
3. Where is it? Building? Area? Office?.....
4. Why was it placed?
5. Are you aware that people will be injured when the bomb goes off?
6. How do you know so much about the bomb?
7. Where are you now?
8. What is your name / telephone number?

COMPLETE THE FOLLOWING SECTION AFTER RECEPTION OF CALL:

ORIGIN OF CALL:							
Local	Long Distance	Call Box	Internal	Cell Phone			
CALLER WAS:							
Male	Female	Adult	Teenager	Child			
LANGUAGE USED: '							
Afrikaans	English	Other (stipulate):					
CALLER'S VOICE WAS:							
Loud	High Pitched	Raspy	Pleasant	Calm	Crying	Disguised	Muffled
Soft	Deep	Clear	Angry	Excited	Laughing	Normal	Other
CALLER'S ACCENT WAS							
Heavy (Pronounced)	English	American	German	African	Irish	Slight	Afrikaans
Indian	British	Coloured	Other:				
BACKGROUND SOUNDS:							
Factory Machines	Bedlam	Party Atmosphere	Animals	Voices	Street Noises	Television Radio	Office Machines
Music	Trains	Aircraft	House Noises	None	Other:		

COMMENTS:

PERSON RECEIVING CALL:

15. EVACUATION

ALL STAFF AND STUDENTS

UPON RECEIPT OF EVACUATION ORDER, ALARM OR VOICE SIGNAL FROM THE EVACUATION ADDRESS SYSTEM:

1. Always remain calm.
2. Follow instructions from staff and floor marshals.
3. Do not run but move quickly.
4. Assist those that require help.
5. Keep to the left of the corridors and in single file.
6. Unlock and make sure there is no one inside the office – confirm the empty room with the Code Orange Evacuation Notice on the outside.
7. Proceed to the assembly points closest to your premises as indicated on the map.
8. Await instructions from the Emergency Coordinator.

RISK AND PROTECTION SERVICES

- Inform Emergency Coordinator of the emergency.

UPON INSTRUCTIONS FROM THE EMERGENCY COORDINATOR:

- Inform the Fire Department.
- Sound evacuation alarm or signal.
- Keep telephone lines clear.

EMERGENCY COORDINATOR

1. Assess the situation.
2. Contact Reception and personnel / duty manager.
3. Instruct Reception to notify Fire Department
4. Summon Fire, First Aid and Evacuation Teams.
5. Unlock and open all doors.
6. Cordon off affected area.
7. Order partial or full evacuation.
8. Follow Emergency Procedures Check Sheet.
9. Dispatch staff to affected entrances to conduct access control and restrict access to affected area and direct Emergency services to area.
10. Deploy staff at key cordon points to restrict access.
11. Conduct sweeps of entire area to remove all individuals.
12. Establish forward command post.
13. Dispatch staff to direct emergency services.
14. Dispatch staff to assembly points.
15. Liaise with emergency services upon arrival.

16. CHEMICAL SPILL

GENERAL

Accidents resulting in the release of chemicals will occur despite the best efforts of researchers and students to practice safe science in the laboratories. It is therefore essential that all laboratory personnel have a spill response plan that includes the necessary procedures and materials to contain and clean up a chemical spill.

SPILL RESPONSE PROCEDURES

MAJOR SPILL

- Assess the situation and if found necessary, evacuate the building by following the evacuation procedures.
- Call Risk and Protection Services (808 2333) and give details of the accident including the specific location, types of hazardous materials involved and whether there is personal injury.
- If the accident involves personal injury or chemical contamination, follow the above steps as appropriate and at the same time:
 - Move the victim from the immediate area of fire, explosion, or spill if this can be done without further injury to the victim or you.
 - Locate the nearest emergency safety shower and/or eyewash station. Remove all contaminated clothing from the victim and flush all areas of the body in contact with the chemicals with plenty of water for at least 15 minutes.
 - Administer first aid as appropriate and immediately seek medical attention.

MINOR SPILL

In the event of a spill involving the release of a type or quantity of a chemical which does not pose an immediate risk to health and does not involve chemical contamination to the body:

- Notify laboratory personnel and students in the vicinity of the spill of the accident.
- Isolate the area. Close all laboratory doors and evacuate the immediate area if necessary.
- Remove ignition sources and unplug nearby electrical equipment.
- Establish as much exhaust ventilation as possible in the vicinity to vent vapours to the outside of the building only by opening windows and switching on fume hoods within the laboratory.
- Locate the emergency spill kit and choose appropriate personal protective equipment (PPE) such as goggles, face shields, impervious gloves, laboratory coats and aprons, etc. If a respirator is required, it must be properly fit tested for the person before being used.
- Confine and contain the spill. Cover with appropriate absorbent material. Acid and base spills should be neutralized prior to clean-up but beware of noxious fumes that

can result from the neutralizing reaction. Sweep solid material into plastic dust pans and place in a sealed container.

- Wet mop the spill area and remember to decontaminate the cleaning tools used in this process. All contaminated items must be placed in sealed containers and disposed of using the appropriate disposal procedures.

17. BIOLOGICAL CONTAMINATION

GENERAL

The consequences of any spill of biological material can be minimized by performing all work on plastic-backed absorbent liner to absorb spills. A simple spill kit should be readily available and should include the following items:

- chlorine bleach or some other concentrated disinfectant
- package or roll of paper towels
- autoclavable bag
- latex or nitrile gloves
- forceps for picking up broken glass

SPILLS INSIDE A BIOLOGICAL SAFETY CABINET

- LEAVE THE CABINET TURNED ON.
- Put on gloves and a lab coat.
- Spray or wipe cabinet walls, work surfaces, and equipment with disinfectant equivalent to a 1:10 bleach solution. If necessary, flood the work surface, as well as drain pans and catch basins below the work surface, with disinfectant.
- Wait at least 20 minutes.
- Soak up disinfectant and spill with paper towels. Drain catch basin into a container. Lift front exhaust grill and tray and wipe all surfaces. Ensure that no paper towels or solid debris are blown into the area beneath the grill.
- Autoclave all clean-up materials before disposal in the biohazardous waste container.
- Wash hands and any exposed surfaces thoroughly after the clean-up procedure.

SMALL SPILLS OUTSIDE OF A BIOLOGICAL SAFETY CABINET

- Put on gloves and a lab coat.
- Cover spill with paper towels and gently apply disinfectant, proceeding from the outer edge of the spill to its centre.
- Leave in place for at least 20 minutes.
- Pick up the towels, autoclave, and discard into a biohazard container. Use forceps to pick up any broken glass and place them into a sharp's container.
- Re-wipe the spill area with disinfectant.
- Remove gloves and thoroughly wash hands.
- Wash hands and any exposed surfaces thoroughly after the clean-up procedure.

LARGE SPILL (MORE THAN 500ML) OF BL-2 MATERIAL OUTSIDE OF A BIOLOGICAL SAFETY CABINET

- HOLD YOUR BREATH AND LEAVE THE ROOM IMMEDIATELY.
- Warn others to stay out of the spill area to prevent spread of contamination.
- Post a sign on the door warning others of the biological materials spill.
- Remove any contaminated clothing and put it into a biohazard bag for later autoclaving.
- Wash hands and exposed skin and inform the Laboratory Manager or Emergency Coordinator about the spill.
- Put on protective clothing (lab coat, gloves, mask, eye protection, shoe covers) and assemble clean-up materials.
- Wait 30 minutes before re-entering the contaminated area to allow dissipation of aerosols.
- Cover the spill with paper towels and gently apply disinfectant, proceeding from the outer edge of the spill to its centre.
- Leave in place for at least 20 minutes.
- Collect all treated materials, autoclave, and discard in a biohazard container. Use forceps to pick up any broken glass and place in a sharp's container.
- Re-wipe the spill area with disinfectant.
- Remove glove and wash hands thoroughly.
- If biological matter has any infectious properties, seek medical advice from an appropriate medical practitioner as a cautionary measure.

18. DUTIES OF PERSONNEL

Duties of the Emergency Coordinator

- Comprehensive emergency planning is undertaken with the assistance of the General Engineering Risk Management Committee, and such planning is recorded in the form of a written Emergency Plan.
- Liaise closely with the Dean of the Faculty of Engineering and the Faculty of Engineering Risk Management Committee.
- Ensure an emergency control area is available and equipped.
- Liaise with the emergency team leaders.
- Devise a method whereby the General Engineering Risk Management Committee can be convened without delay and as soon as possible.
- Appoint Team leaders/members in writing, with their respective duties.
- Ensure that receptionists/secretaries are trained to summon emergency services when authorized to do so, without delay.
- Ensure that Emergency Response Team members are identifiable.
- Ensure that communications are effective and that clear or coded instructions can be given to the staff and students and Emergency Response Team members in any part of the building with the minimum loss of time.
- Ensure that all exits, evacuation routes and emergency equipment are prominently marked / displayed.
- Ensure that the required emergency equipment is procured and kept serviceable and secure.
- Ensure that monthly status reports are received from all staff.
- Ensure that regular exercises and practices are held with the assistance of the other managers.
- Liaise with neighbours with a view to mutual aid.
- Ensure that the Emergency Plan is regularly reviewed and updated.

Duties of Fire Team

Responsible to the Emergency Coordinator for the following:

- To assist the Emergency Coordinator with emergency planning and keeping him informed during emergencies.
- Assessment of premises from a fire point of view in conjunction with the Fire Department.
- Implementation of effective fire prevention measures.

- Submission of recommendations for procurement of firefighting equipment, after liaison with the fire department.
- Training of all fire teams.
- To ensure that fire escapes are accessible and comply with regulations.
- To ensure that fire-fighting equipment is kept secure, accessible, correctly positioned/marked and well maintained.
- The training of all personnel in basic use of fire equipment and fire prevention.
- Receipt of status reports. These reports should cover equipment, personnel, training and possible hazards.
- To ensure that during an emergency, fire fighters/wardens are identifiable.

Duties of First Aid Team

Responsible to the Emergency Coordinator for the following:

- To assist with emergency planning and keep him/her informed during emergencies.
- The establishment of a Medical Centre.
- The determination and procurement of adequate first aid equipment in consultation with first aid societies or the appropriate medical authorities.
- To ensure that first aid equipment is correctly distributed and readily accessible.
- That first aiders are trained to Medical and Occupational Health and Safety standards.
- The locations of first aid equipment are to be located at the Reception and Rectors office.
- To ensure that first aid equipment is kept secure, accessible, and correctly positioned/marked.
- To ensure that during an emergency, first aiders are identifiable.

Duties of Evacuation Team Leader

Responsible to the Emergency Coordinator for the following:

- Assist with emergency planning and keep him informed during actual emergencies.
- That the safest evacuation routes (and alternatives) are clearly marked and kept unobstructed at all times. These must be indicated on the site and floor plans (refer to attached floor plans).
- Training of evacuators and personnel.
- To ensure that panic is kept to a minimum when evacuating and that order is maintained throughout.

19. Emergency Telephone Numbers

Emergency Telephone Numbers - 2023

CAMPUS SECURITY (USBD)	:	021 - 808 2333/ 4202 / 4891
CAMPUS HEALTH SERVICES (CHS)	:	021 – 808 3496 / 3494
CAMPUS HEALTH SERVICES (CHS) After hours	:	076 431 0305 (after hours)
24-Hour Rape Crisis Stellenbosch	:	082-977-8581
24-Hour Psychology Crisis Service	:	082-557-0880
ER24 Ambulance / Medical Care	:	010 – 205 3032
Stellenbosch Hospital	:	021 – 808 6100 / 021 887 0310
Stb Medi-Clinic Private Hospital Emergency	:	021 – 861 2094 / 021 – 861 2095
Stb Fire and Rescue	:	021 - 808 8888
Police Flying Squad	:	10 111
SAPS Stellenbosch	:	021 – 809 5015
Stellenbosch Municipality Emergency 24/h	:	021 - 808 8890

20. Evacuation Procedure

In case of an emergency situation:

- Contact US Risk and Protection Services, they will make necessary contacts.
- Emergency officers activate the alarms and ensure that all rooms are evacuated.
- Stay calm – **Do not** run!
- Leave office/workspace and encourage everyone to leave the building immediately.
- Make sure that all windows are closed (in **all** emergency situations).
- Last person leaving a room – place marker on door handle.
(e.g., orange notice card, piece of fabric – or yellow notice card if you are unable to declare the room checked)
- Follow escape route to the assembly area – East side of building on the east corner of Process Engineering Building– at the entrance area of Entr 6. – on parking/road area.
- **Do NOT** use lifts.
- Help people with disabilities and visitors.
- If there are any obstructions, follow an alternate route to the assembly area.
- Form groups at the assembly area and wait for further instructions.

- Report missing persons.

Procedure and handling of: Fire, Explosions & Bomb threats

Follow the normal evacuation procedure for an emergency situation, but if it will not endanger your life, try to put out the fire.

21. Evacuation Team / Floor Marshalls

Name	Responsible for area	Office Contact no.	Cell Phone Contact no.
Corne Schutte	Emergency Coordinator	X3617	082 447 7780
Anel de Beer	Backup Emergency Coordinator	X3927	082 899 4948
Gary Bailey	IT Hub/server Ground Floor	X4297	079 632 1979
Thuli Mkhali	1 st Floor	X4949	078 566 7834
Eldon Burger	2 nd Floor East level	X4231	083 947 9818
Joubert van Eeden	2 nd Floor West level	X3970	082 578 3862
Karina Smith/Amelia Henning	3 rd Floor	X4234 X9532	082 386 2239 083 635 5775
Elize Williams	3 rd Floor Walkway		Walkie-Talkie
Wouter Bam	4 th Floor East level	X9054	083 328 3105
Stephan Nel	4 th Floor West level	X4231	079 545 4304
Sissie Willemse	4 th Floor Walkway		Walkie-Talkie
Philani Zincume	5 th Floor East level	X4085	083 271 8612
Imke de Kock	5 th Floor West level	X9533	083 528 6119
Dean Johnson	East/West Staircases	X9700	084 362 2912
Dean Johnson	Alarm Activation	X9700	084 362 2912

All hours: Contact US Risk and Protection

Services at **021 808 2333** / 021 808 4891 or 021 808 4202

22. ESCAPE ROUTE PLAN / Assembly point

Blue arrows, at the boom entrance no. 6 in Banghoek Rd

**At the EASTERN side of the
Process Engineering Building**

**On the parking terrain and in traffic area
at Entrance 6**





**CODE ORANGE
EVACUATION**

- Windows are closed
- Nobody is left inside

NO ENTRY!

EVACUATE
the building
immediately via
the staircase.



**CODE YELLOW
INTERNAL
EMERGENCY**

Could not gain entry.

Unable to declare
this room checked
and evacuated.